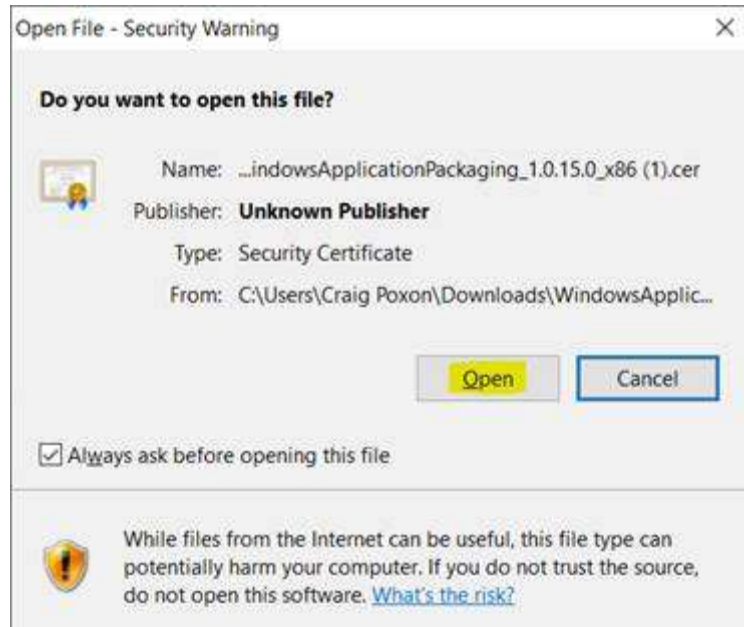


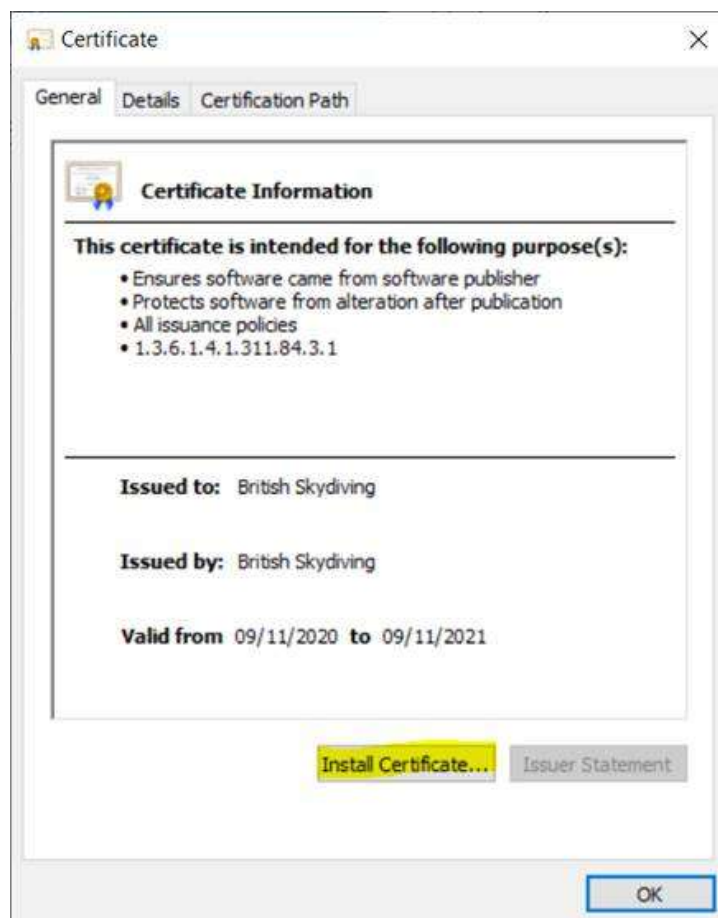
SmartWaiver Uploader Installation Instructions

First download the Certificate (instructions for installing it below)

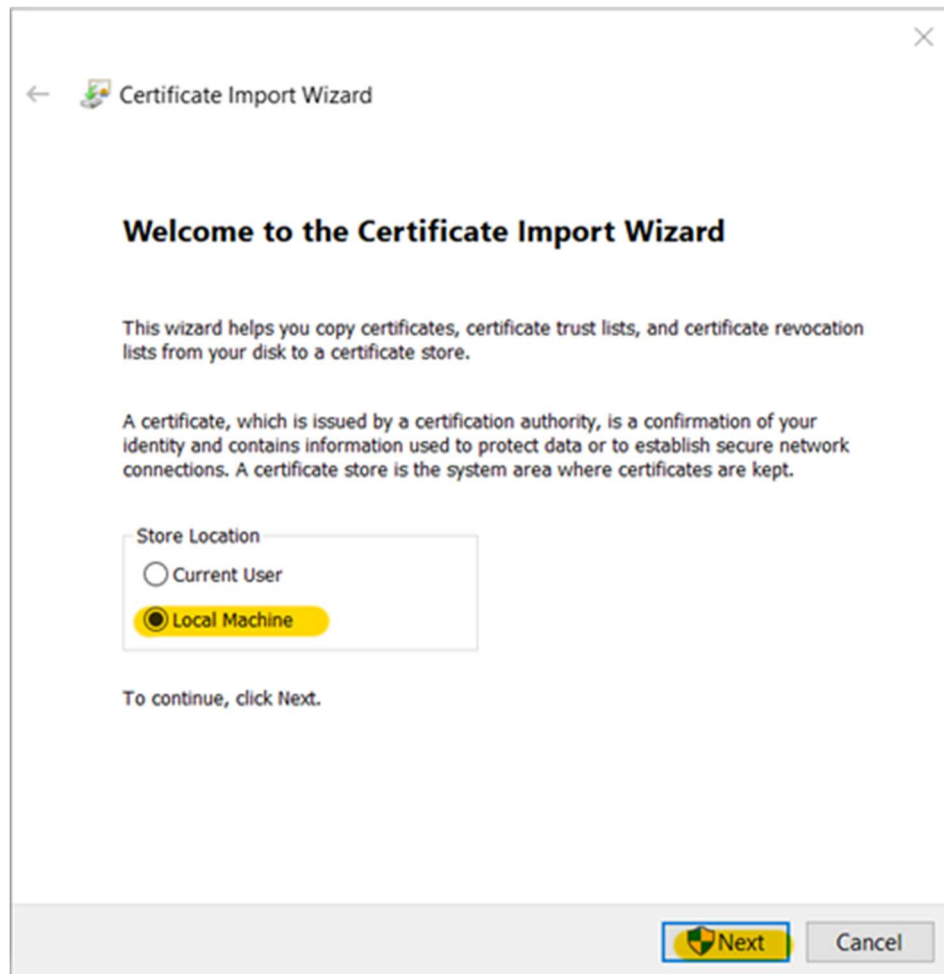
1. Click Open on the Security Warning dialog:



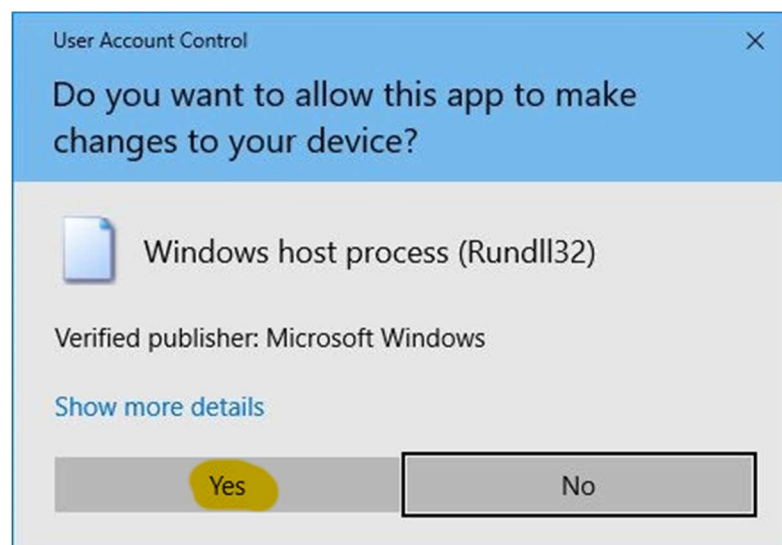
2. Click the Instal Certificate... on the Certificate dialog:



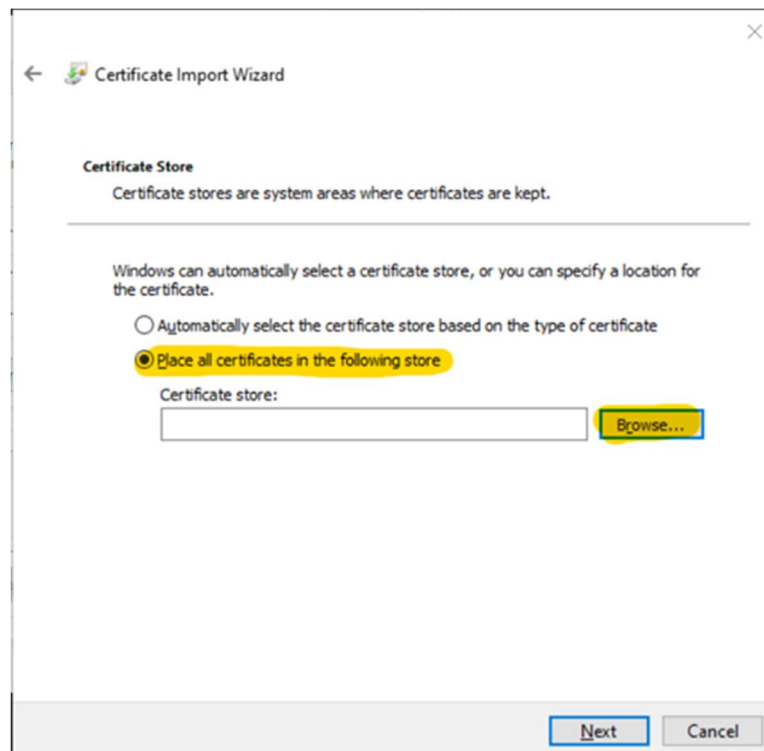
3. In the Certificate Import dialog, select the Local Machine Store Location and click the Next button



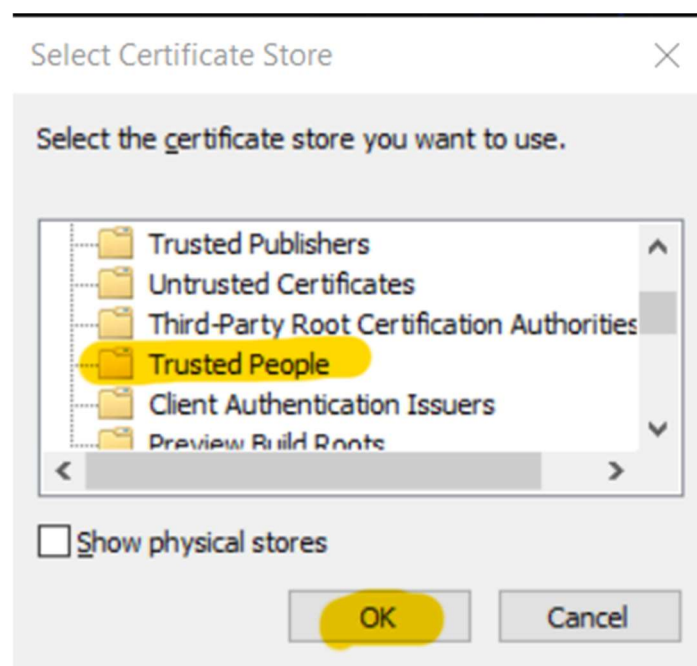
4. In the User Access Control dialog click the Yes button to allow this app to make changes to your device (install the Uploader)



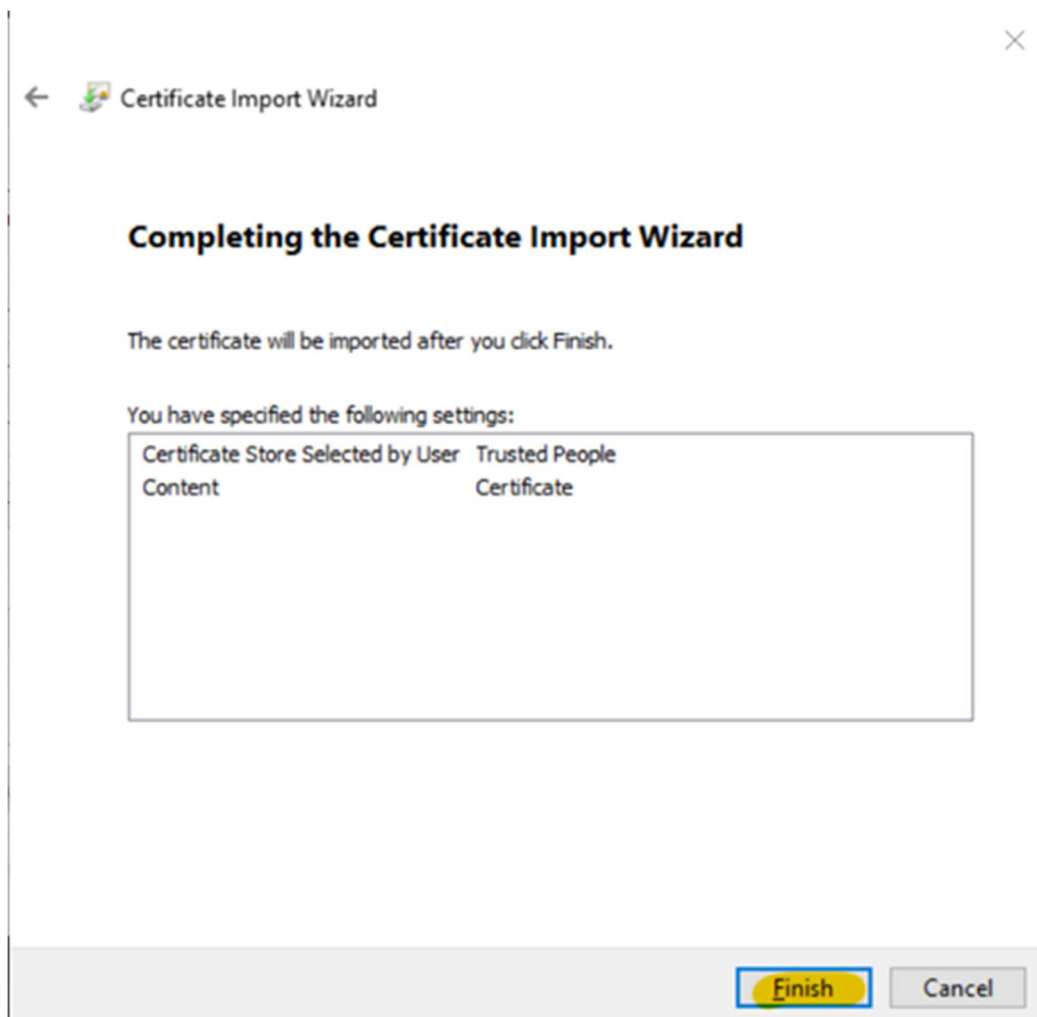
5. In the Certificate Import Wizard dialog, click the “Place all the certificates in the following store”, click the Browse button



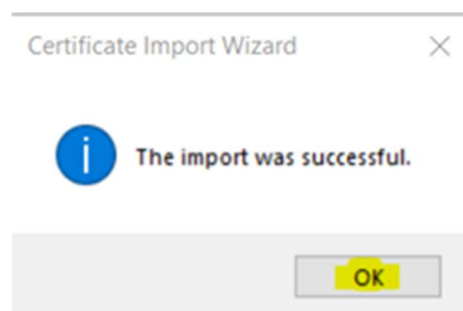
6. In the Select Certificate Store dialog, scroll down, select the Trusted People item and click the OK button



7. Click the Finish button to complete the Certificate Import Wizard

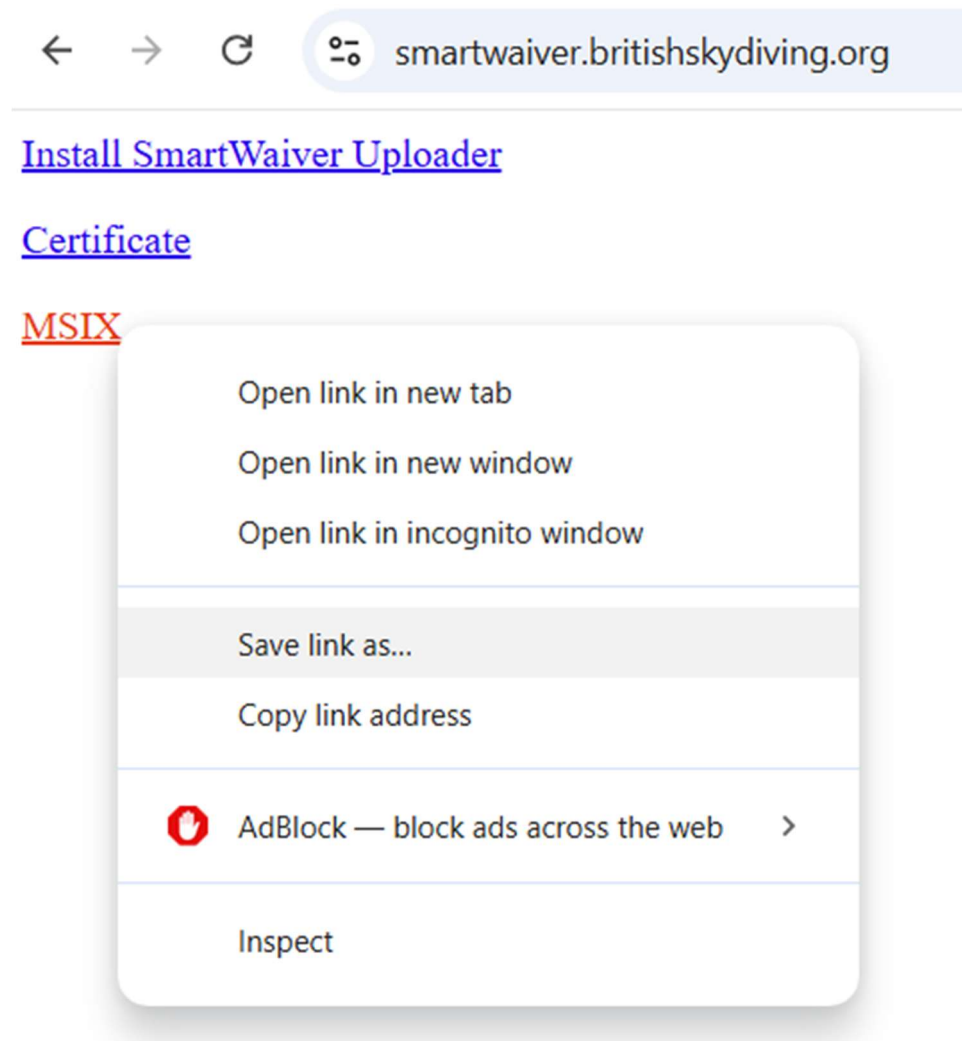


8. Click OK on the message box informing you that the import was successful.



Next download the MSIX.

You'll need to download the MSIX file to your machine but right-mouse clicking on the link and clicking Save Link As...



Then run the MSIX locally from your hard drive by navigating to where you downloaded it to and double click the files. It won't install directly from the website due to security restrictions.